
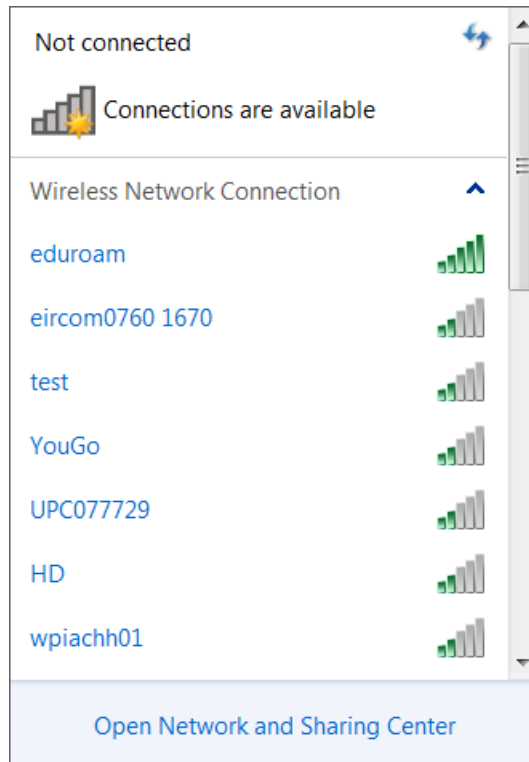


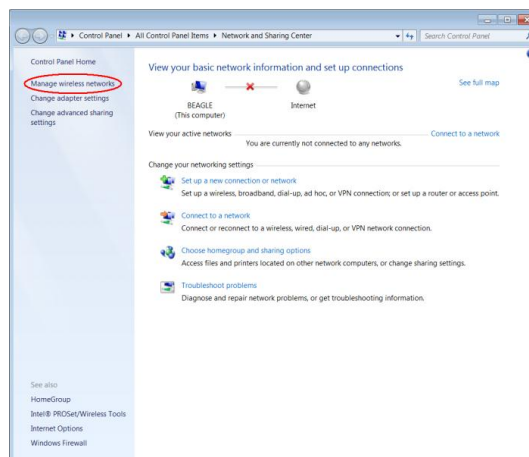


## EDUROAM Automatic Setup on Windows 7

- 1.) Left-click on the application icon  in the tray. Click **Open Network and Sharing Center** to manage your wifi profiles.

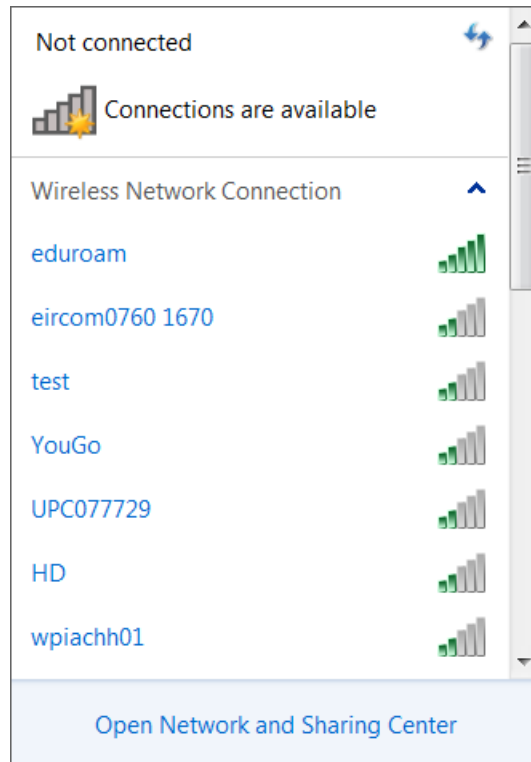


- 2.) Click **Manage wireless networks**, on the left of the window.

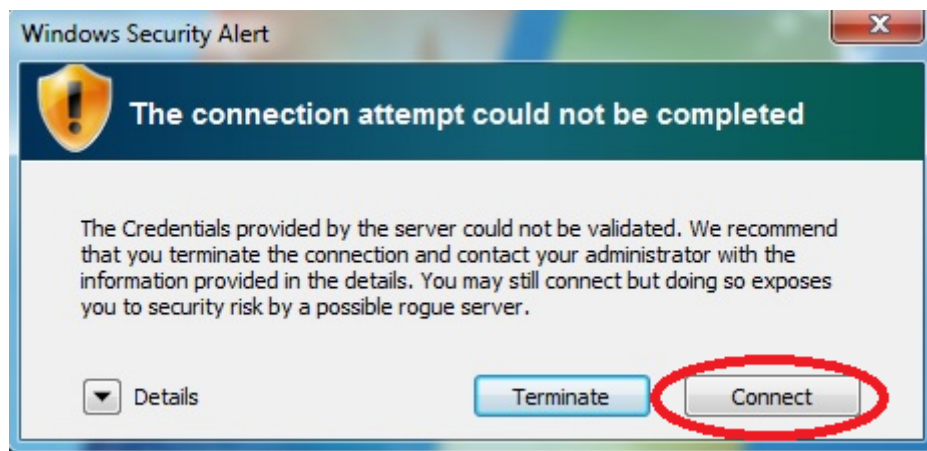


- 3.) In the wireless network management window click on eduroam and select **Remove**.

4.) Left-click on the application icon  in the tray. Click on eduroam and connect



5.) If the following prompt appears select Connect



6.) Enter your College logon Details

*Student*

*Username: studentnumber@stangelas.nuigalway.ie*

*Password: same as pc / moodle / email login.*

*Staff*

*Username: staffname@stangelas.nuigalway.ie*

*Password: same as email and pc login*